



# Brooklands Studios

A new flexible and versatile production space in Surrey



[www.brooklands.studio](http://www.brooklands.studio)

# About Us

Based within the banks of the old Brooklands Racetrack just outside of London, we offer a new secure and private studio space. Created by a highly regarded and established production technical team we offer fully adaptive and rentable studio with the unique additional offering of world class technical delivery allowing any idea to be brought to life.



With full studio production facility, broadcast and steaming capabilities all built in-house, we can deliver your concept live to your audience immediately.



Brooklands  
Studios



[www.brooklands.studio](http://www.brooklands.studio)

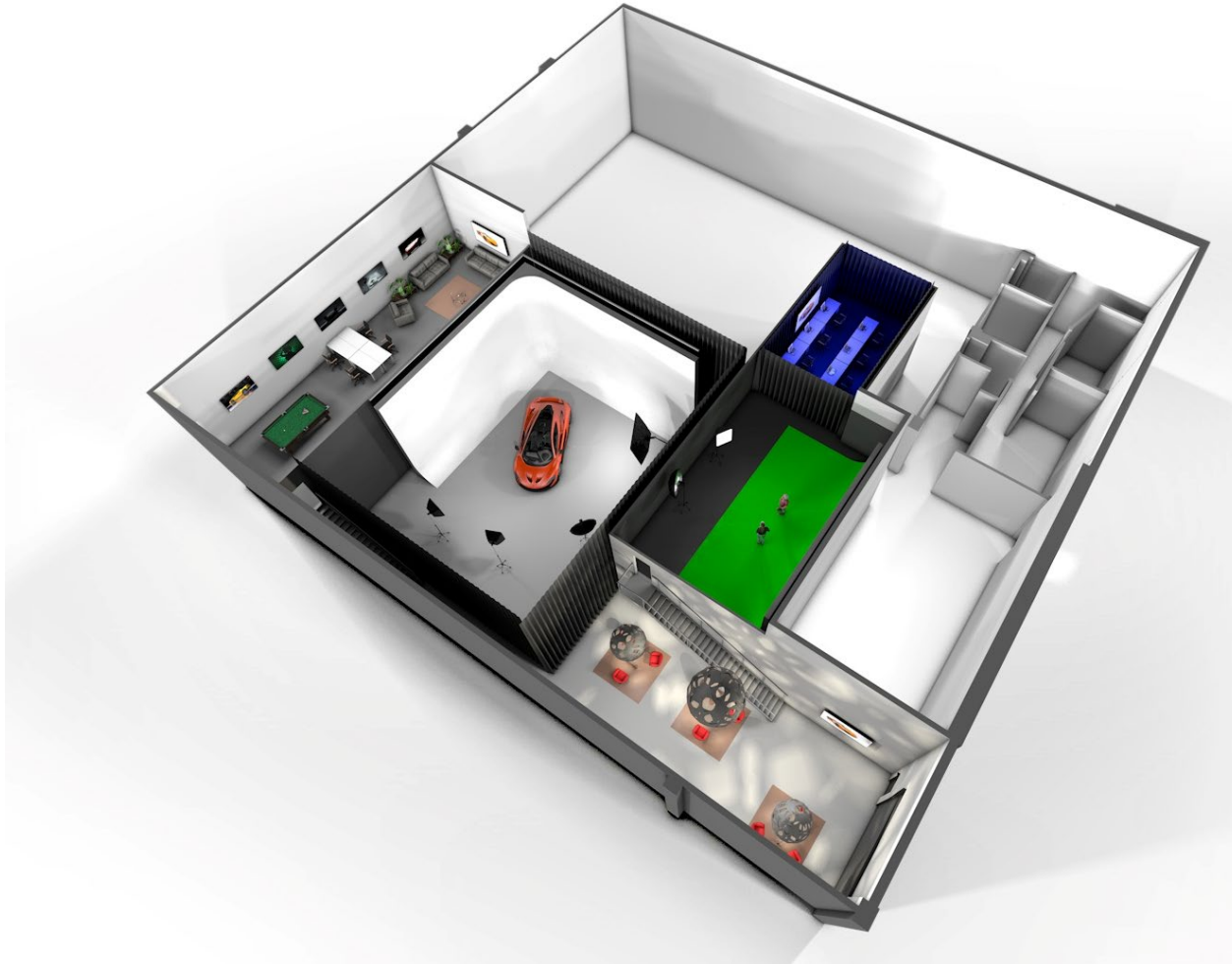
# What We Can Do



The studio spaces are **fully flexible** and we can accommodate anything including the following

- Product Reveals
- Rehearsals
- Music Shoots
- Production Streams
- Webinars
- Filming
- Photography
- Virtual Events





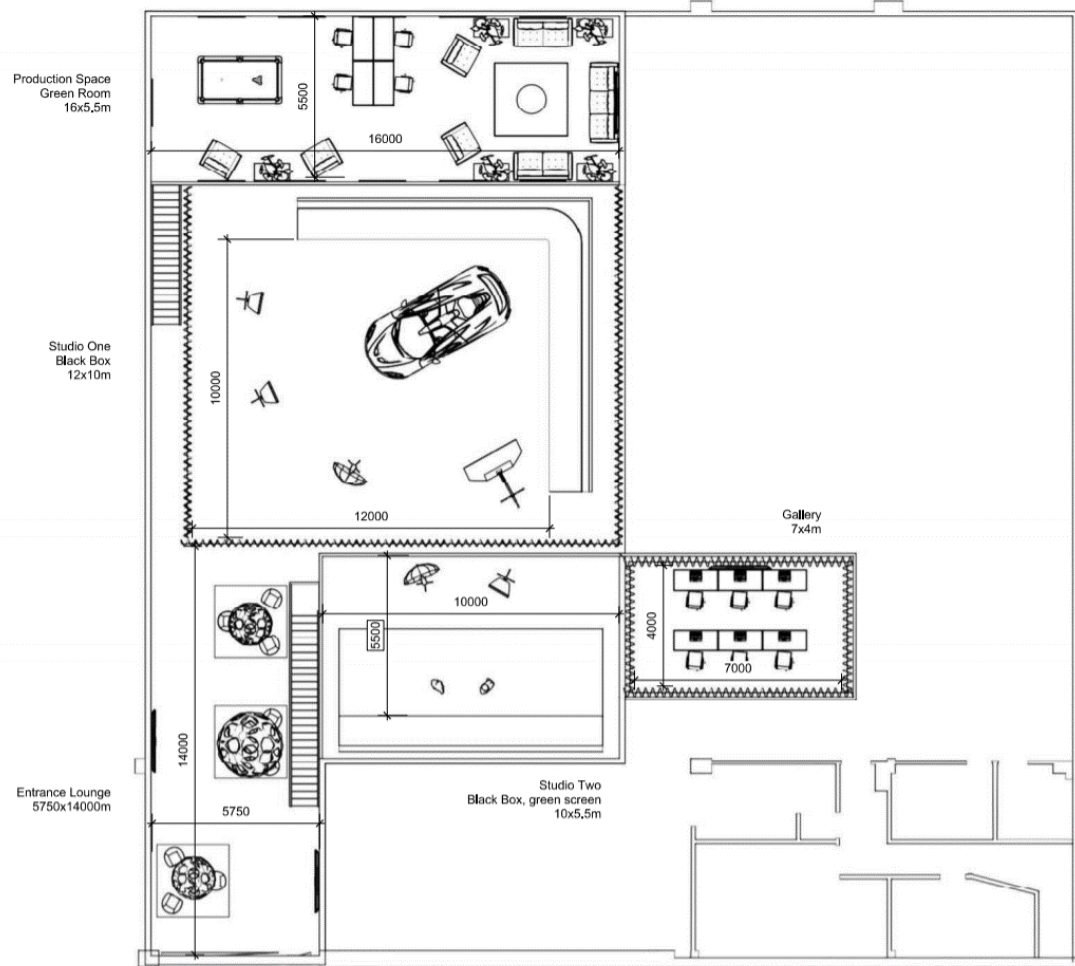
# Studio Plan

Offering two fully flexible studios and hospitality areas, Brooklands Studio has everything to bring your production and live broadcasts to your audience.



# Studio Plan

Easy access is offered through a 4.5mtr wide and 6mtr tall shutter.



# Studio One



# Studio One



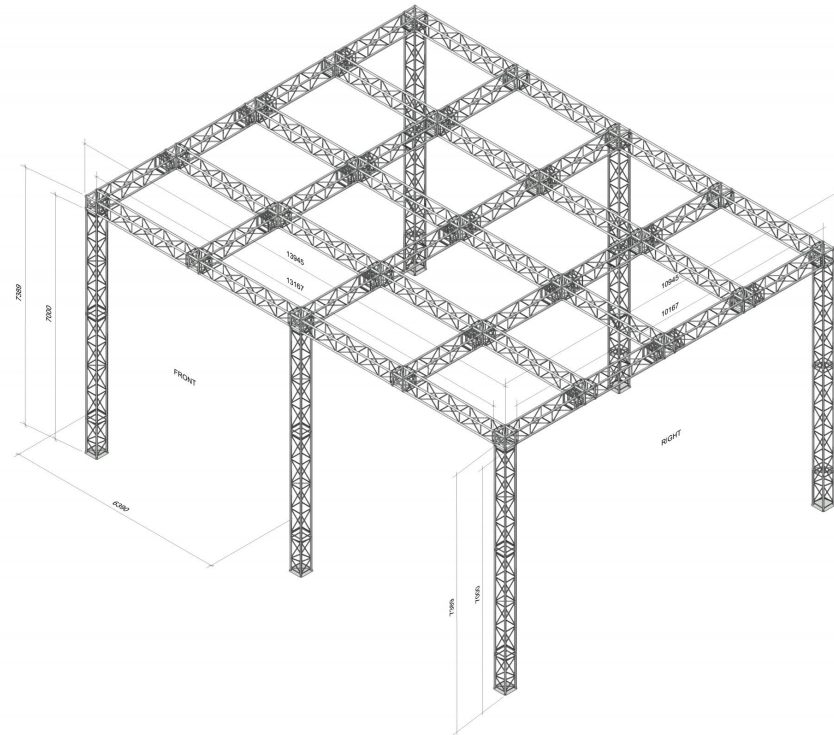
Studio One is our largest production space of approximately 168 square meters. It also offers a height of 7.2 meters with full rigging capabilities. It has easy vehicle access through a 4.5 metre wide shutter.

We also have excellent in-house technical resource and equipment to accommodate all production elements.

The space is a black box as standard but we can provide a cyc for a white or chromakey infinity backdrop



# Studio One



## Space

- 11mtr x 14mtr floor space
- 7.2mtr rig height
- Fully blacked out
- White painted floor (can be repainted)



## Technical

- 125A 3/P Power
- 200 MB fibre leased line
- All technical lighting equipment in house
- Direct streaming capabilities



## Access

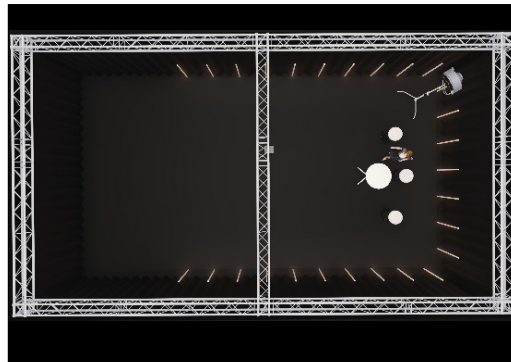
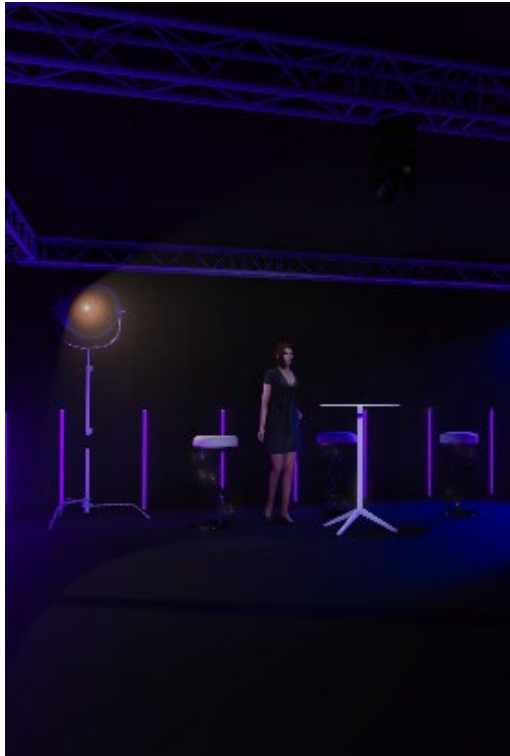
- Drive-in loading access
- On-site car parking







# Studio Two

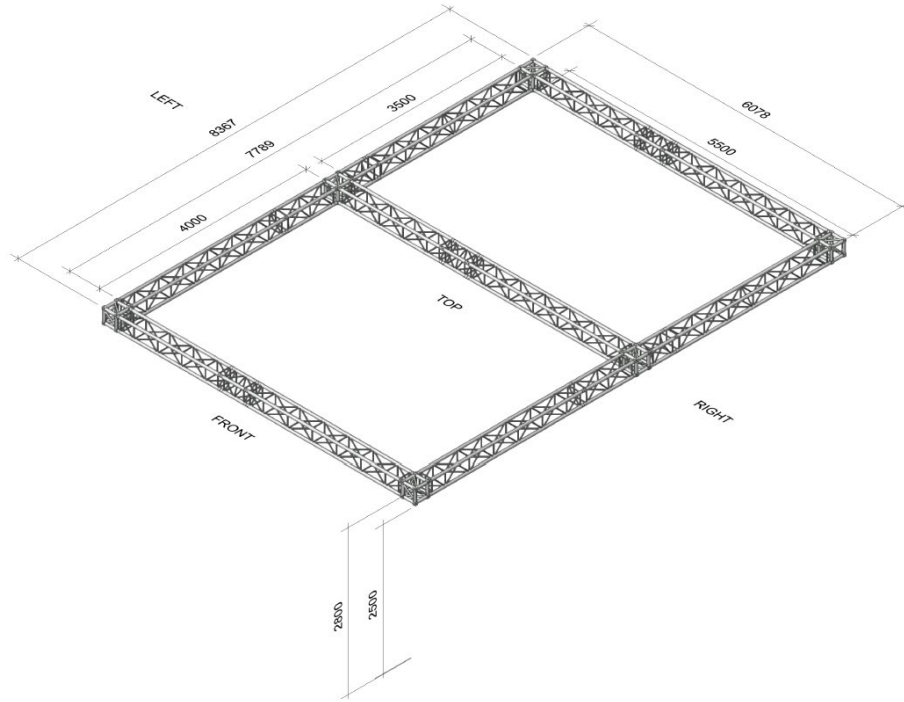


Studio Two offers a smaller yet versatile mezzanine studio. The studio also can open up to over look Studio One. The space has a truss box system above with a height of 2.5 meter.

Our in-house technical resource and equipment can accommodate all production elements.

The space is a black box as standard but we can provide a cyc for a white or chromakey backdrop if required along with any scenic or furniture elements.

# Studio Two



## Space

- 10mtr x 6mtr floor space
- Fully blacked out
- Black carpet floor)



## Technical

- 125A 3/P Power
- 200 MB fibre leased line
- All technical lighting equipment in house
- Direct streaming capabilities



## Access

- First floor mezzanine - access via stairs
- Fork lift loading
- On-site car parking



# Ancillary Area

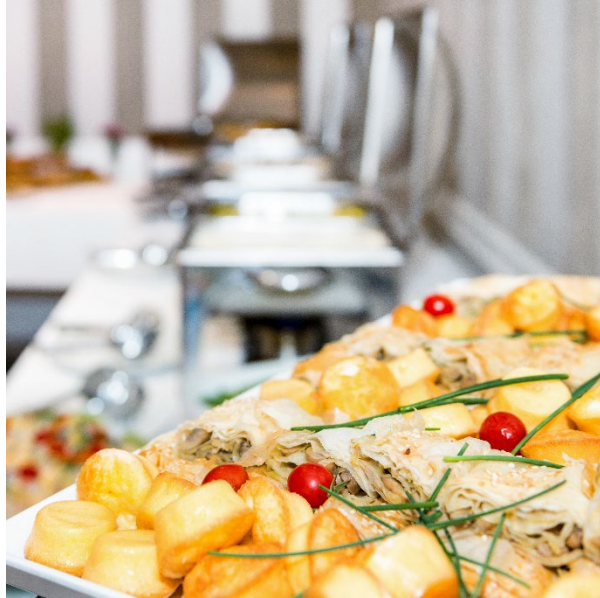
Included within the rental are changing rooms, a large green room and a communal hospitality space.

Studio One has balcony access from either side of the studio for aerial shots with the option to rig camera systems over the space too.





# Facilities



## Catering

Tea and coffee is always available and in addition we can offer extensive catering options through our preferred supplier at competitive prices.



## Parking

Free parking is available on site and we can also accommodate any outside broadcast vehicles and provide the necessary power and logistical arrangements. We also have access for 42 foot trailers to deliver into the studio space through a 4.5 metre wide shutter for ease of loading.



## Accommodation

There are a number of good restaurants and hotels in the area and the Brooklands Hotel and Spa is a short walk away. We can arrange for any bookings and also liaise with transfers to and from Weybridge Station - approx. 5-minute drive away. There is also a retail park very close by.



# Equipment

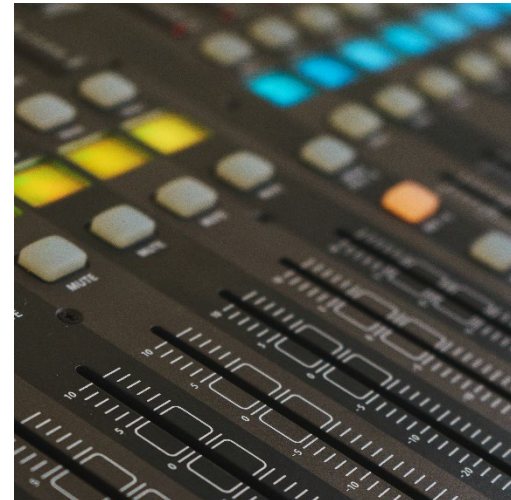
We own a large amount of AV and technical equipment to support any production within the studio space.



We have both production lighting and photography lighting available in house. We can also offer a pre-visualization service to build ultra-realistic renders on what the space will look like for you.



We can provide all types of video technology for use in your production, whether this is for presentation purposes or more architectural and creative backdrops for your live broadcast.



We have a full range of sound equipment to hire from radio microphones and large PA systems through to the latest digital mixing consoles.



Our access to all types of cameras and camera systems is extensive which feeds into the gallery for recording, mixing and streaming.





# Brooklands Studios

Unit A1 Vickers Drive North  
Brooklands Industrial Estate  
Weybridge  
Surrey  
KT13 0YU

+44 (0) 203 422 8530  
[contact@brooklands.studio](mailto:contact@brooklands.studio)



[www.brooklands.studio](http://www.brooklands.studio)